

HOSPITAL

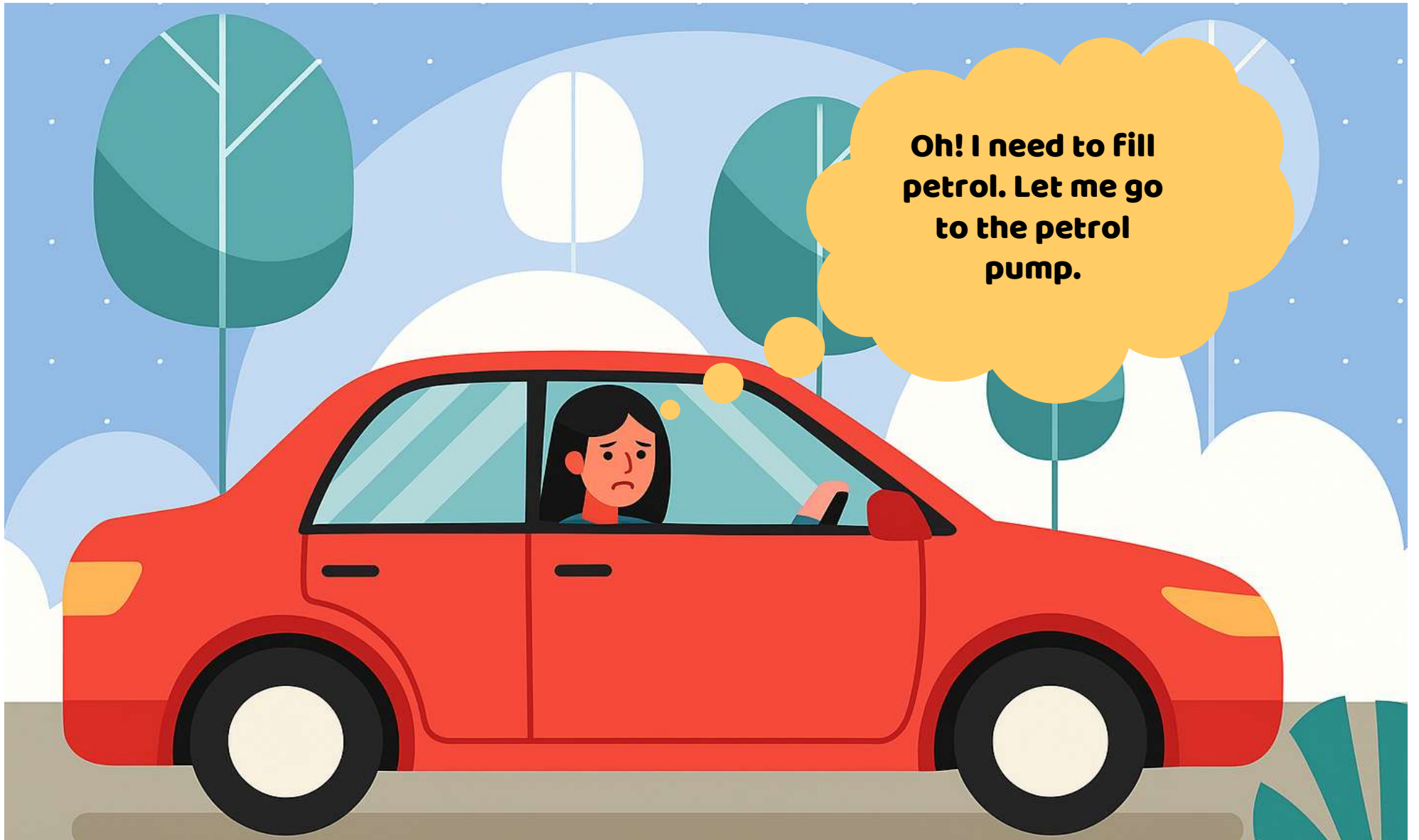


Ishita's Hospital Visit

Ishita is not feeling well. She decides to go and take help from a doctor.

**I am sick. I need
help. I will go and
see a doctor.**







GAS

**How much
petrol should
I fill?**

500

**Fill for 500
Rupees**



HOSPITAL

Ishita drives to the hospital

**Please
register. Fill
this form.**



HOSPITAL

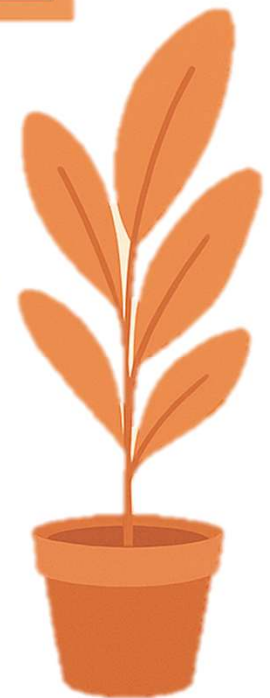
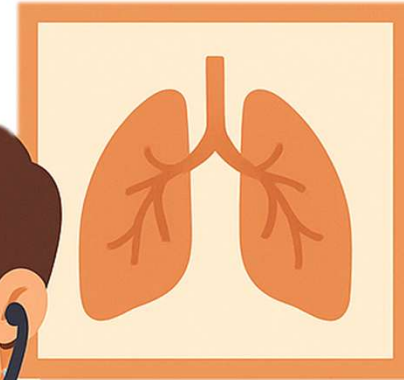




CONSUL

Oh, I think you have an infection. I will write a prescription for medicines.

Thank you Doctor



Medical Shop

Anna please
give me these
medicines?



Medical Shop

How much?

Please pay 250 Rupees

250

Medical Shop

Thank
you!



Discussion: Note the responses on the board as you ask questions about the entire scenario.

1. How was Ishita feeling?
2. What did she do when she felt sick?
3. Where did she go first?
4. What did she do at the petrol bunk?
5. How much did she pay?
6. Where did she go next?
7. Who asked her to pay money at the hospital?
8. How much did she pay?
9. Where did she go next?
10. How much did she pay for the medicines?

Let us summarise how she spent money.

Petrol - Rs. 500

Hospital - Rs.200

Medicines - Rs.250.

- 11.How much did she spend in total? (Let children respond using either their books or calculator.
- 12.What are the things she bought? (Petrol and medicines)
- 13.Did she buy anything at the hospital?
- 14.Why did she give money to the receptionist? (To see the doctor)
- 15.Which person saw her only when she paid the money? (Doctor)

Conclude:

- A. Travel to hospital (needs petrol → needs money)
- B. Doctor visit (consultation fee → needs money)
- C. Buy medicines at pharmacy (needs money)

So, we pay money

- a. To buy things
- b. To some people when they help us.